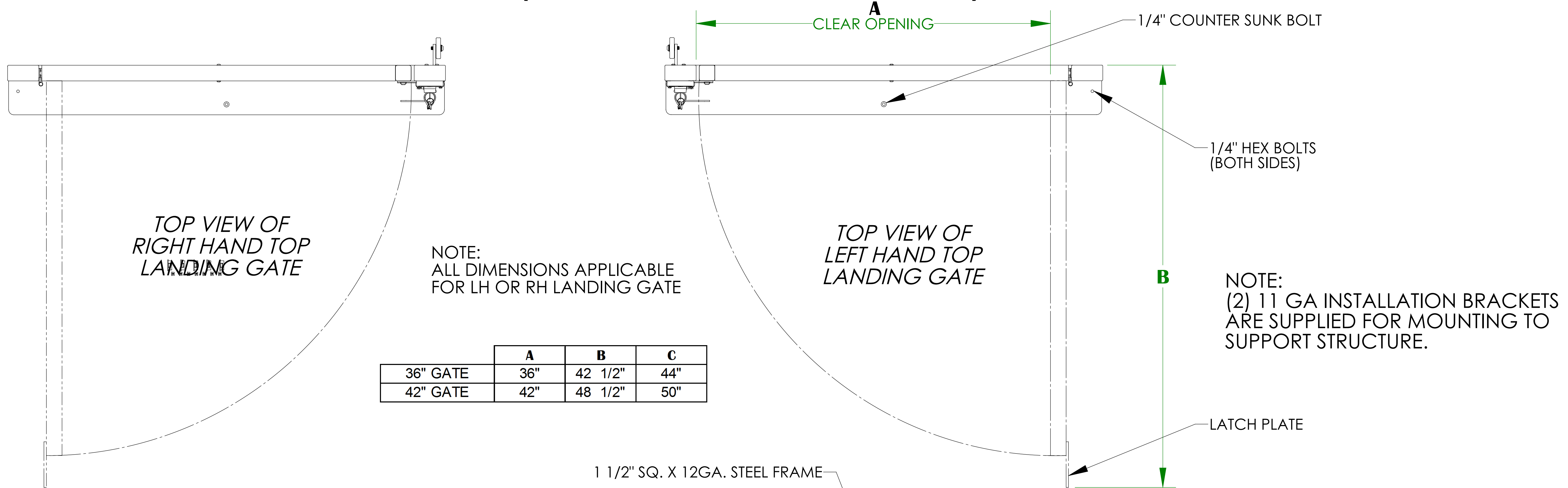


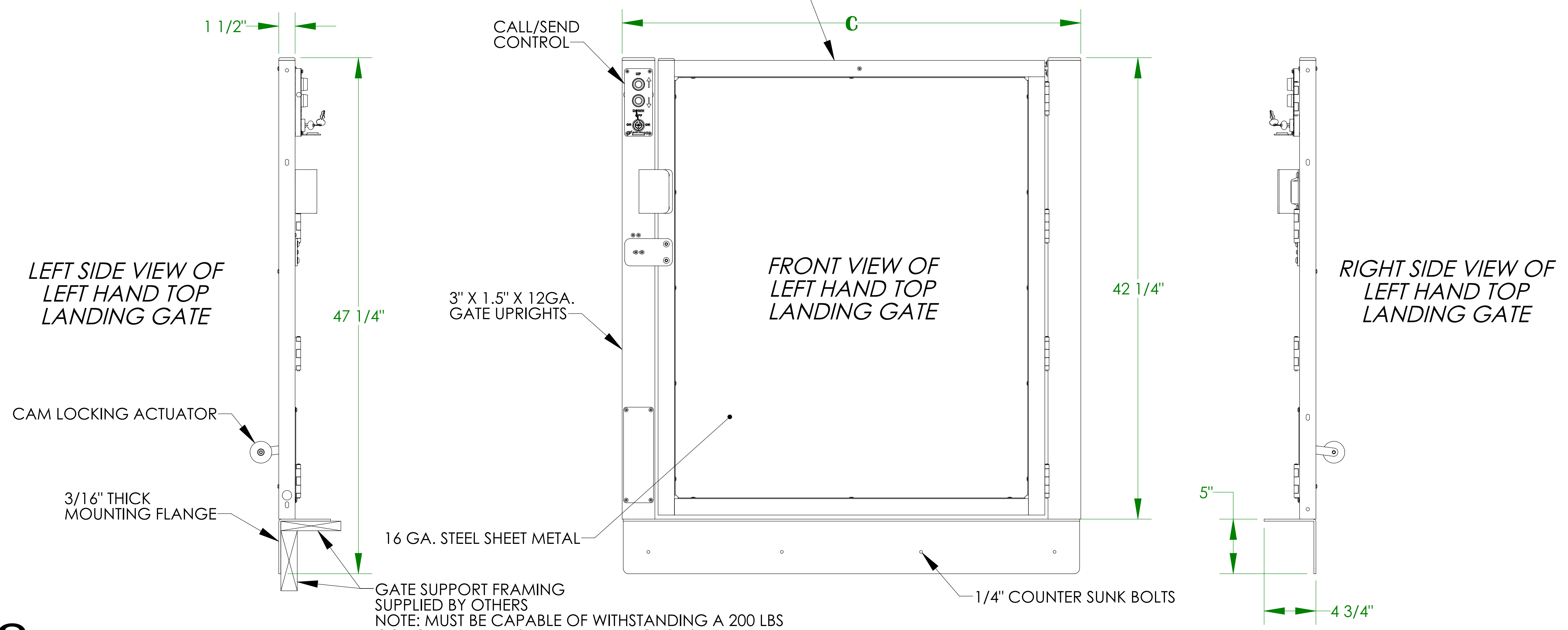
# LANDING GATE DETAIL

## VPL-3100/VPL-3200B SERIES VERTICAL PLATFORM LIFT

### (VIEWED AT TOP LANDING)



	A	B	C
36" GATE	36"	42 1/2"	44"
42" GATE	42"	48 1/2"	50"



**ILS-00938**  
**SHEET 1 OF 4**  
**REV. 5 (5328)(4/8/13)(DPG)**

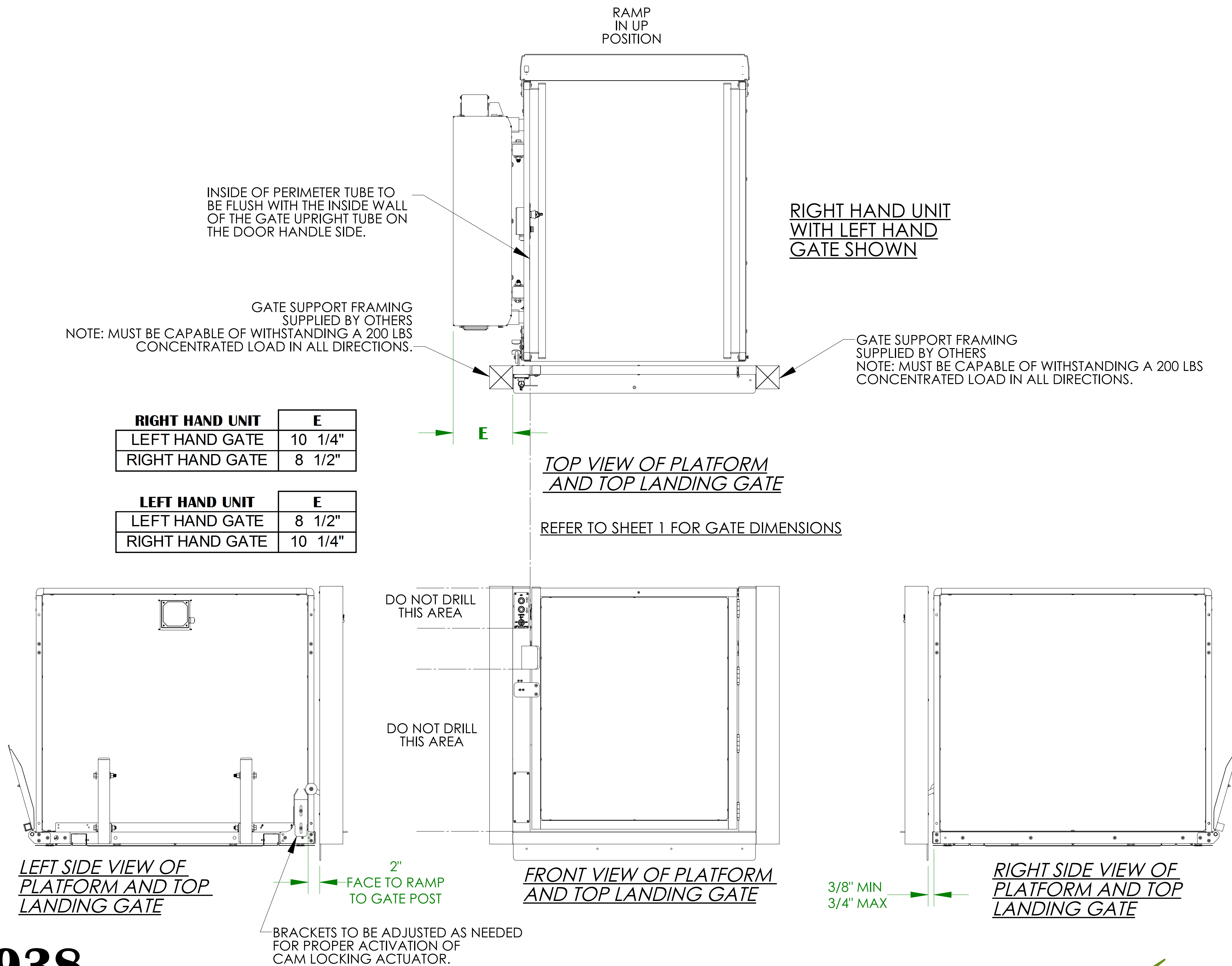
Bruno Independent Living Aids, Inc., 1780 Executive Drive, P.O. Box 84, Oconomowoc, WI 53066  
 Phone (800) 882-8183 Fax (262) 953-5501  
 Any reproduction or other use of these materials without written permission of Bruno Independent Living Aids, Inc. is expressly prohibited.  
 Bruno Independent Living Aids, Inc. reserves the right to modify or make changes to these specifications at any time without notice.

  
 for your independence  
 ©Bruno Independent Living Aids, Inc.

# LANDING GATE ALIGNMENT (STRAIGHT-THRU PLATFORM)

## VPL-3100/VPL-3200B SERIES VERTICAL PLATFORM LIFT

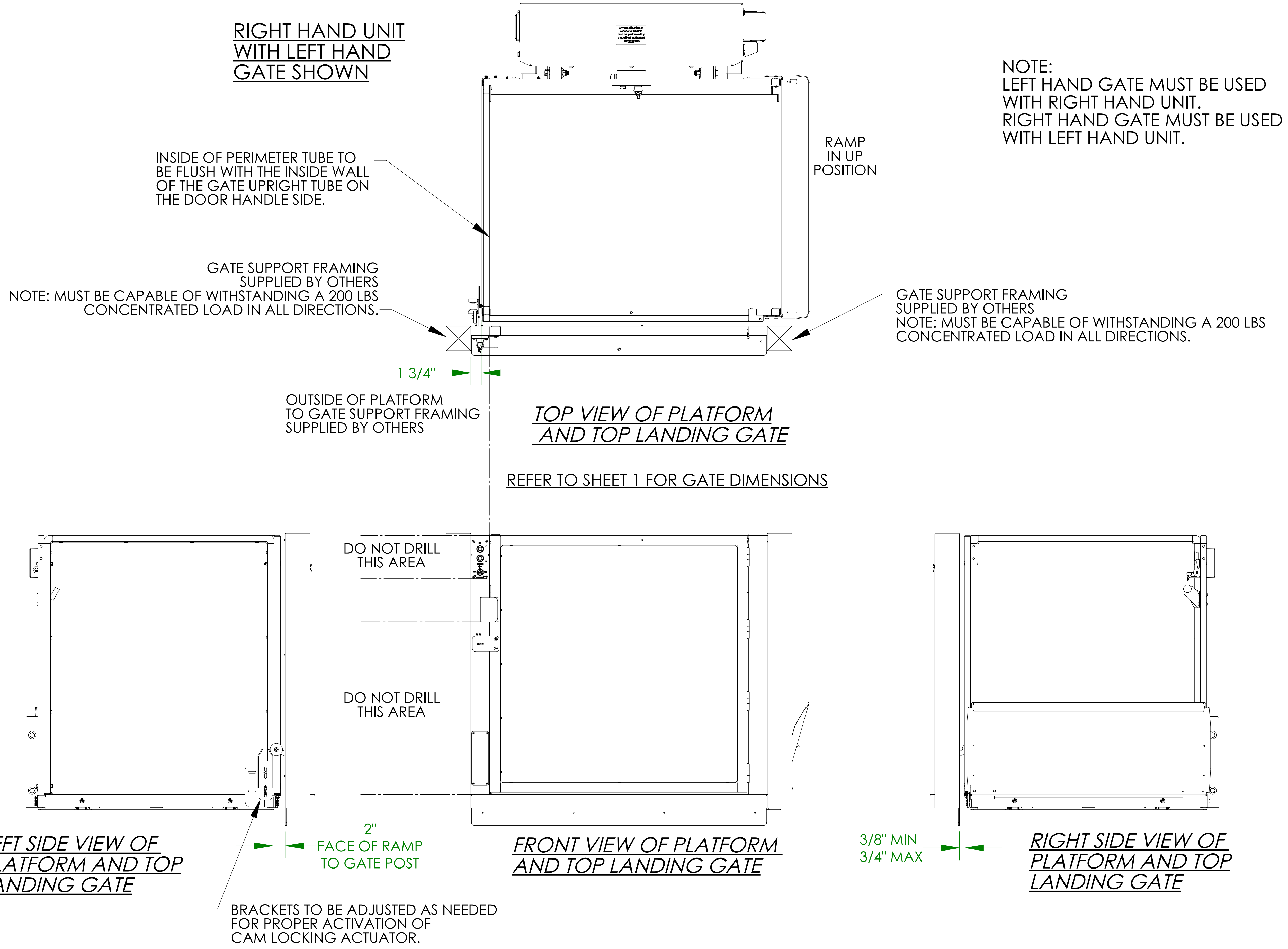
### (VIEWED AT TOP LANDING)



# LANDING GATE ALIGNMENT (90°/ADJACENT EXIT PLATFORM)

## VPL-3100/VPL-3200B SERIES VERTICAL PLATFORM LIFT

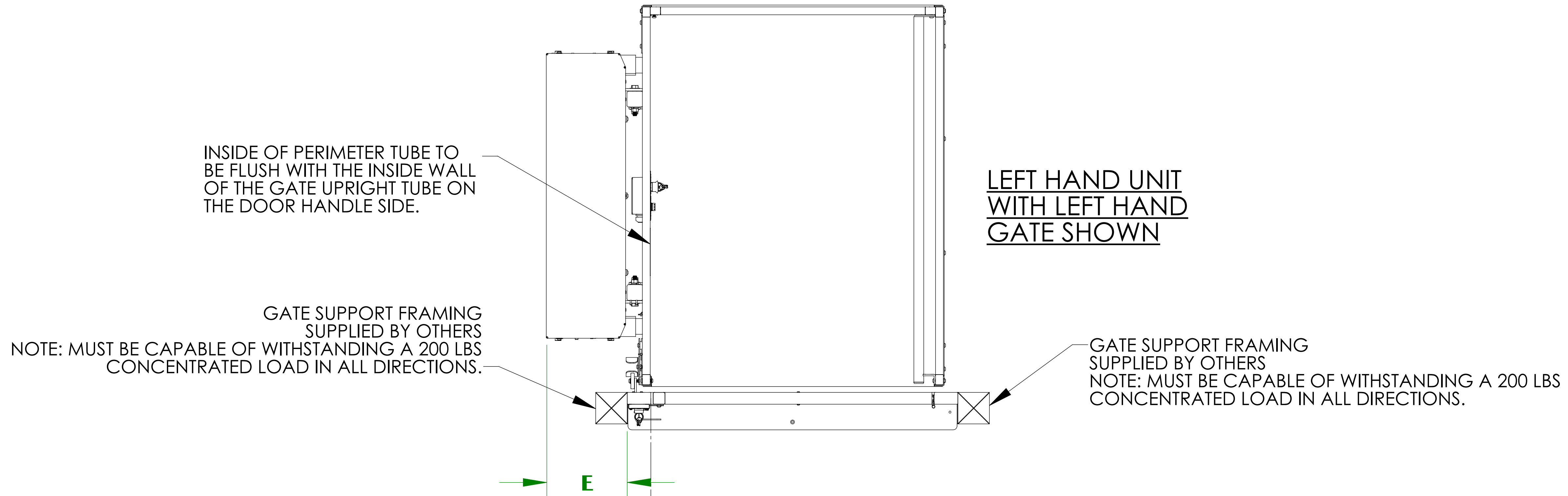
### (VIEWED AT TOP LANDING)



# LANDING GATE ALIGNMENT (SAME SIDE PLATFORM)

## 3200B SERIES VERTICAL PLATFORM LIFT

### (VIEWED AT TOP LANDING)

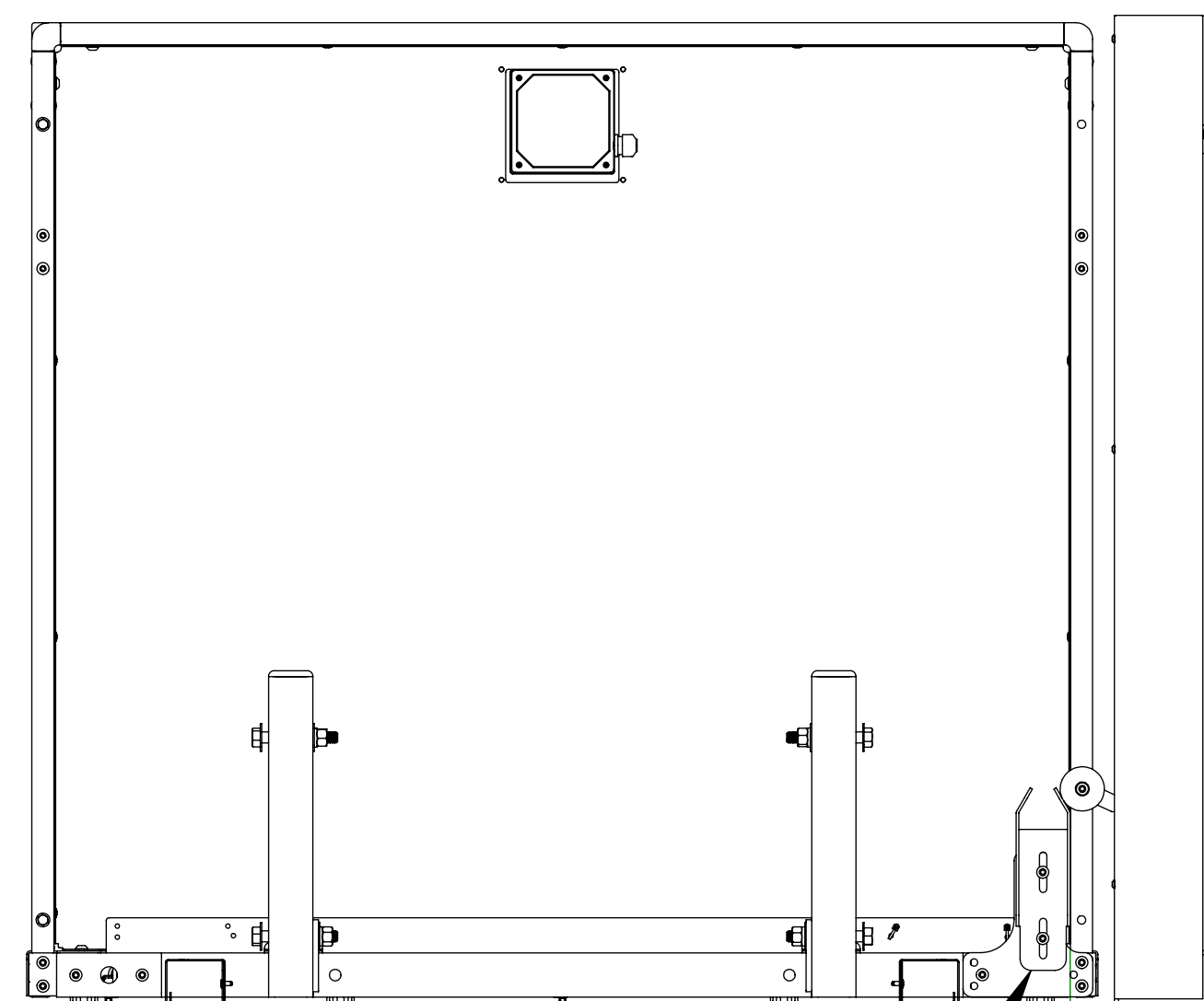


TOP VIEW OF PLATFORM AND TOP LANDING GATE

REFER TO SHEET 1 FOR GATE DIMENSIONS

LEFT HAND UNIT	E
LEFT HAND GATE	10 1/4"
RIGHT HAND GATE	8 1/2"

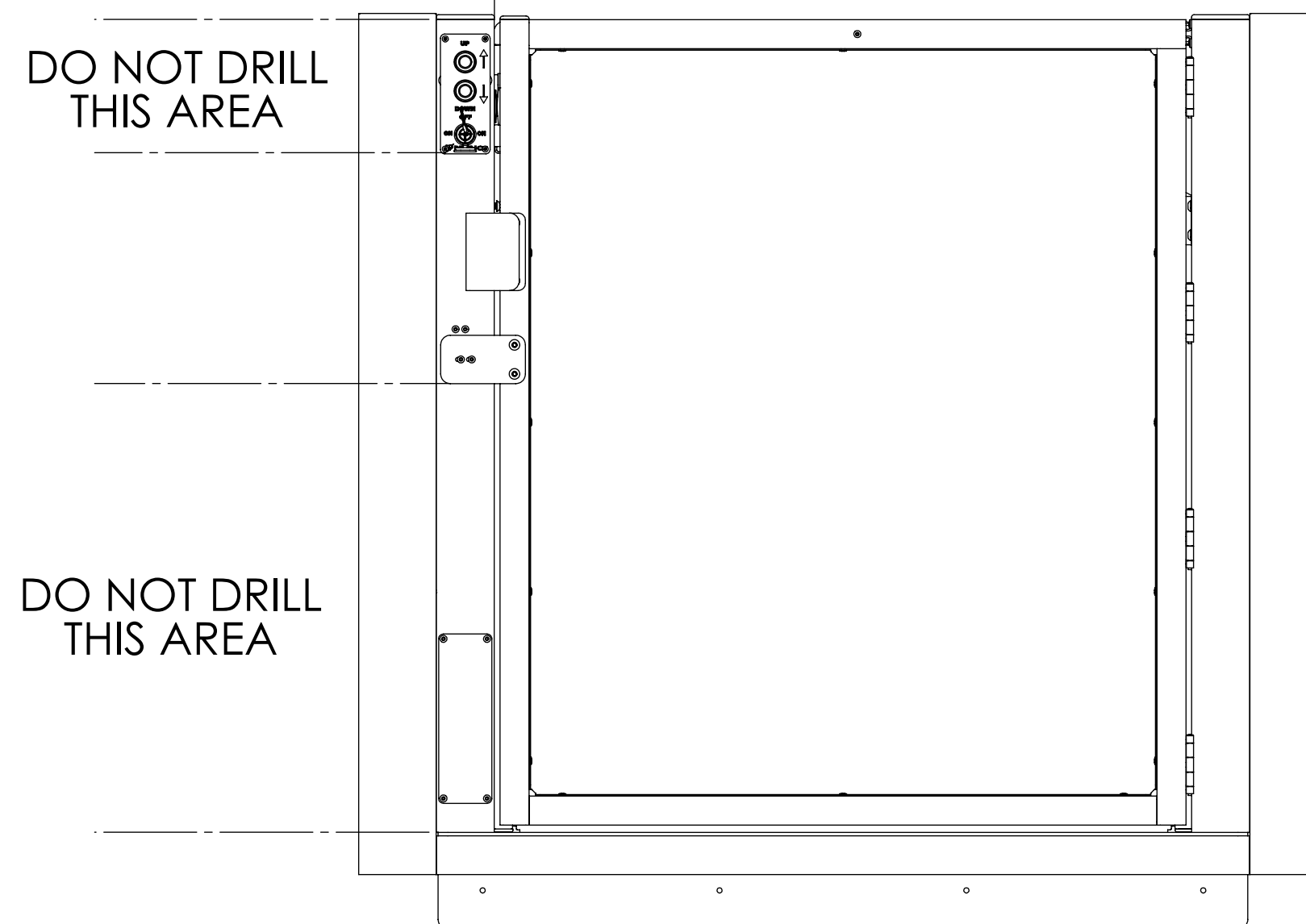
RIGHT HAND UNIT	E
LEFT HAND GATE	8 1/2"
RIGHT HAND GATE	10 1/4"



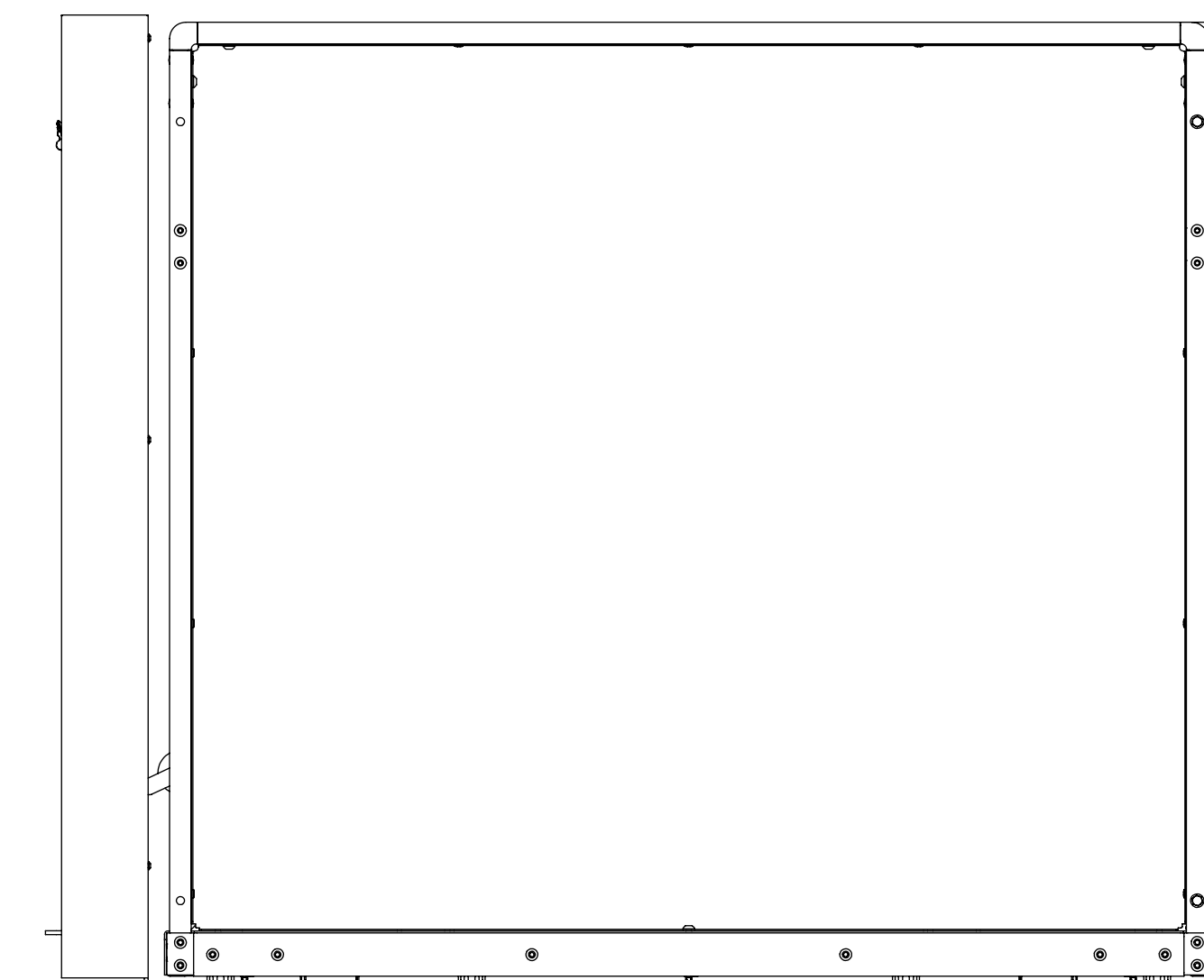
LEFT SIDE VIEW OF PLATFORM AND TOP LANDING GATE

2"  
FACE OF RAMP TO GATE POST

BRACKETS TO BE ADJUSTED AS NEEDED FOR PROPER ACTIVATION OF CAM LOCKING ACTUATOR.



FRONT VIEW OF PLATFORM AND TOP LANDING GATE



RIGHT SIDE VIEW OF PLATFORM AND TOP LANDING GATE

3/8" MIN  
3/4" MAX